

SPECIALIZED LIGHTING CONTROLLER



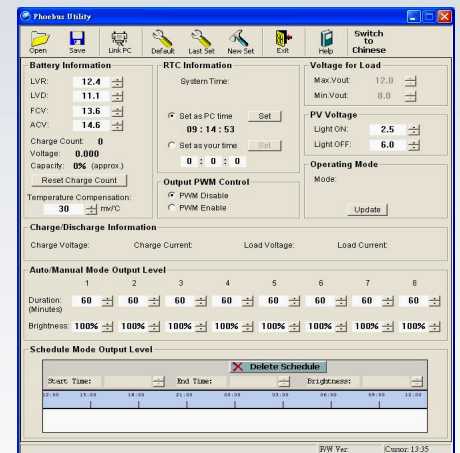
PCL-1512

PCL-1524

ELECTRICAL SPECIFICATIONS		
Characteristic	PWM	
Nominal System Voltage	12V	24V
Max PV Input Voltage/Power	22.5V / 180W	45V / 360W
Output Voltage	12V(8~14V)	24V(18~28V)
Float Voltage	13.6V(13~15V)	27.2V(26~30V)
Absorption Charge Voltage	14.6V(14~16V)	29.2V(28~32V)
Max Charging Current	15A	
Low Voltage Disconnect (LVD)	11.1V(10.5~12.5V)	22.2V(21~25V)
Low Voltage Reconnect (LVR)	12.4V(11.5~13.5V)	24.8V(23~27V)
PV Voltage to Light On/Off	Automatic, 2.5 / 6V (Adjustable 0~10V)	
LED Indicator	2 LEDs	
Protections	Over Temperature, Battery Reverse Polarity, Reverse Current at Night, Short Circuit	
Day/Night Detection	Auto detect via PV or RTC	
Lighting Brightness Control	Automatic	
Auto Light On/Off	Auto or Software-Controlled	
GENERAL SPECIFICATIONS		
Operating Temp.	0°C~60°C	
Storage Temp.	-10°C~70°C	
Enclosure Type	Indoor	
Working Humidity	20~90%RH Non-Condensing	
Dimension	182*82.6*38.3mm	
Weight	1Kg	

KEY FEATURES

- Specialized dual-PWM solar charging controller with intelligent lighting control.
- Automatic detection of 12 or 24V battery (on PCL-1524 only).
- Precise lighting control through microcontroller and Real Time Clock (RTC).
- 8 auto-on/off lighting schedules and controls via software mode.
- Automatic brightness control allows power saving.
- RJ45/RS232 interface allows system parameter tweaking.
- Complete protections include LVD/ LVR, over current/voltage, reverse polarity, reverse current at night, short circuit, and over temperature.
- Temperature compensation available.
- 2 years warranty.



*Setting Software Screenshot

*Product specifications are subject to change without prior notice. MPP Solar is a registered trademark of MPP Solar Inc.

